



Via Sant'Anna 131-135
61030 Cartoceto PU (IT)
Telephone + 39 (0)721830605
Fax +39 (0)721837154
e-mail: info@diatheva.com
www.diatheva.com

Recombinant Human CEACAM-1 Peptide

REP0054
300µg

Description

The human carcinoembryonic antigen (CEA) family is composed of 29 genes tandemly arranged on chromosome 19q13.2. Based on nucleotide homologies, these genes are classified into 2 major subfamilies, the CEACAM and the pregnancy-specific glycoprotein (PSG) subgroups. The CEACAM-encoded proteins include CEA, CEACAM-1, and other CEA gene members. The CEA-related cell adhesion molecule 1, CEACAM-1, is a glycoprotein expressed on the surface of human granulocytes and lymphocytes, endothelia, and many epithelia, where it has been assigned to the CD66 cluster. CEACAM-1 is involved in the regulation of important biological processes, such as tumour growth, angiogenesis, and modulation of the immune response. In addition, CEACAM-1 is a receptor of bacteria, such as *Neisseria*, *Haemophilus influenzae*, and *Moraxella catarrhalis*. The binding of Opa (opacity proteins adhesins of *N. meningitidis*) occurs at the non-glycosylated face of the N-domain of CEACAM-1; heterophilic adhesion facilitates bacterial colonization of the gut and bacterial phagocytosis by neutrophils; and is involved in the granulocytes migration during inflammatory responses. The N-terminal domain of CEACAM-1 has been implicated also in mediating homophilic adhesion. This is an important factor for the embryonic organization of the intestinal epithelium and of hepatocytes in the liver, in placental trophoblasts, during muscle and tooth development and vascularization of the central nervous system, in angiogenesis and in the negative regulation of cell proliferation.

Product type

Recombinant peptide

Peptide

35-143 aa residues of human Carcinoembryonic antigen-related cell adhesion molecule 1 (CEACAM1) N-terminal domain - SWS/UNP Accession(s) number: **P13688.2**

Expression system

Escherichia coli

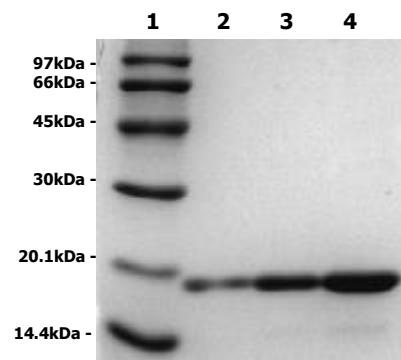
Tested by

SDS Page, Western Blotting
This fragment is recognized in ELISA by Human scFv Anti-CEA clone E8 (Diatheva, code ANT0047-77)

Purity

>92% pure estimated by SDS-PAGE (EU Ph. 5.0 § 2.5.31)

Purified recombinant human CEACAM-1 peptide (lane 1, molecular weight standard; lane 2, 1µg; lane 3, 2.5µg; lane 4, 5µg) was separated by SDS-PAGE (14% polyacrylamide) and stained with Coomassie Blue.



Form

Liquid

Storage buffer

20mM phosphate buffer pH7.5, 0.5M NaCl, 2mM EDTA, 2mM DTT, 1% sucrose, 10% glycerol.

Storage instructions

Shipped on dry ice. Upon delivery aliquot and store at -20°C. Avoid freeze / thaw cycles.