



COVID-19 IgG/IgM RAPID TEST

Immunochromatographic rapid test for the qualitative detection of IgG and IgM antibodies direct against SARS-CoV-2 from whole human blood, serum and plasma samples



COVID-19 IgG/IgM RAPID TEST

Immunochromatographic rapid test for the qualitative detection of IgG and IgM antibodies direct against SARS-CoV-2 from whole human blood, serum and plasma samples



DIATHEVA Srl
Via Sant'Anna 131/135
Cartoceto - 61030 (PU) - Italy
t +39 0721 830605
f +39 0721 837154
info@diatheva.com
www.diatheva.com

SOLGROUP
a breath of life

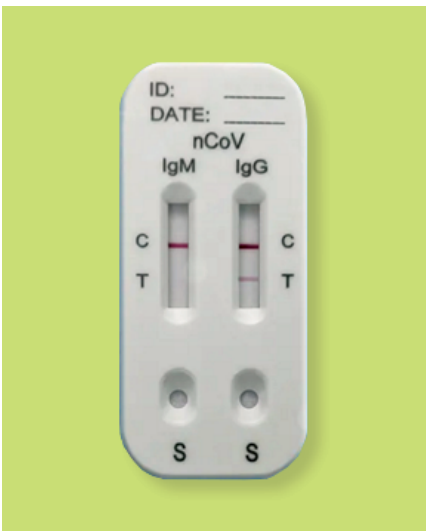


The rapid IgG / IgM test commercialized by Diatheva is a rapid immunochromatographic test used for the detection of IgG and IgM antibodies specific for SARS-CoV-2 from whole human blood, serum or plasma samples. The test provides a quick diagnostic reference for COVID-19, it's CE-IVD and CFDA certified and it is intended for professional use only.

COVID-19 IgG/ IgM RAPID TEST is a rapid test for the detection of IgG and IgM antibodies involved in the immune response during Covid-19 infection. It can be performed quickly without the need to perform swabs or intravenous blood draws.

COVID-19 IgG/ IgM RAPID TEST is able to get results within 15 minutes with the help of a simple lancet device and without the need for any accessory equipment.

The test is intended to be used by healthcare professionals working in hospitals, laboratories of analysis and companies. It is particularly suitable for all situations in which a rapid result is necessary to determine the state of health of people.

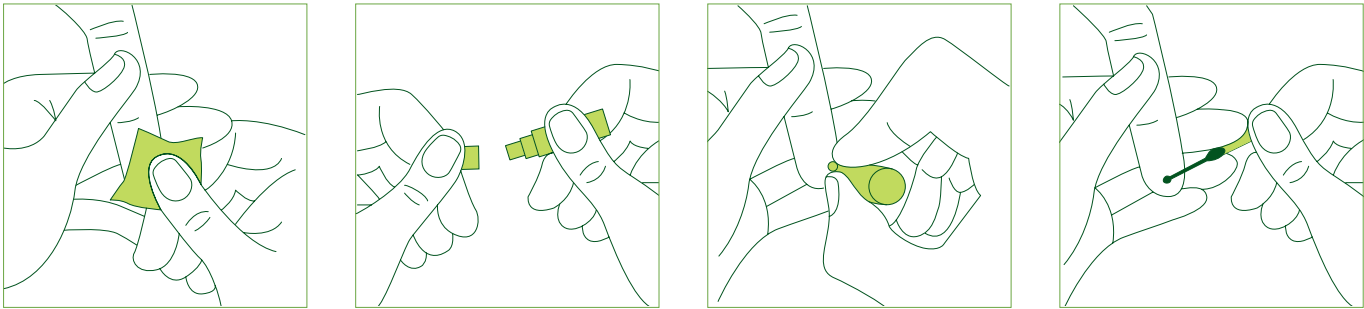


The latent period of SARS-CoV-2 is 1-14 days, with an average of 5 days. Many patients show only mild symptoms such as low fever and mild fatigue without pneumonia. Some infected patients are asymptomatic but still contagious for other people, therefore their diagnosis is essential. Some patients get seriously ill, showing severe respiratory difficulties.

During infection, our immune system produces specific antibodies. IgM antibodies represent the earliest defence against the virus and their detection indicates a recent infection. IgGs are produced later, they last longer, and their detection indicates a previous infection.

For the final diagnosis, the test result must be evaluated by healthcare professionals combined with the patient's clinical manifestations and other laboratory methods.

Specimen collection by lancet



Workflow

1.

Use the patient's ring finger.
2.

Thoroughly disinfect the skin.
3.

Remove the lancet device's safety cap.
4.

Place the lancet device on the fingertip and prick the skin with it.
5.

Discard the lancet device immediately in a biological waste container.
6.

Squeeze the fingertip to form a drop and use the disposable device to collect it.
7.

Avoid the formation of bubbles during specimen collection.
8.

Transfer the sample to the appropriate cassette well immediately after collection avoiding bubbles formation.
9.

Discard the disposable device in a biological waste container after the sample transfer.
10.

Read the result within 15 minutes.

- Benefits**
- Easy to use
 - Results within 15 minutes
 - CE-IVD certification
 - Point of care (POCT)
 - High specificity and sensitivity