



# Product catalogue

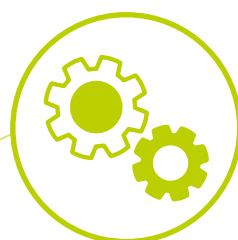
# Diatheva is a leading developer and manufacturer of immunological and molecular biology kits for research and diagnostics application



## Research & Development

All Diatheva's products are developed by our R&D team composed of qualified researchers who combine creative resourcefulness and technical expertise with a robust scientific background and a wide range of skills.

We are constantly working towards improving existing products and developing new innovative kit.



## Production

High-quality and reliable product manufacturing is every bit as important as scientific innovation.

Diatheva has state-of-the-art manufacturing facility, robust processes and an experienced workforce that reflects our commitment to excellence in manufacturing.



## Quality Assurance

Products quality is our highest priority. Rigorous quality control processes guarantee lot-to-lot consistency and security of supply. Diatheva is Good Manufacturing Practice (GMP) and ISO 9001:2015 certified.

Our quality management system is designed to meet stringent regulatory requirements, but flexible enough for us to customize any specific items for your needs.



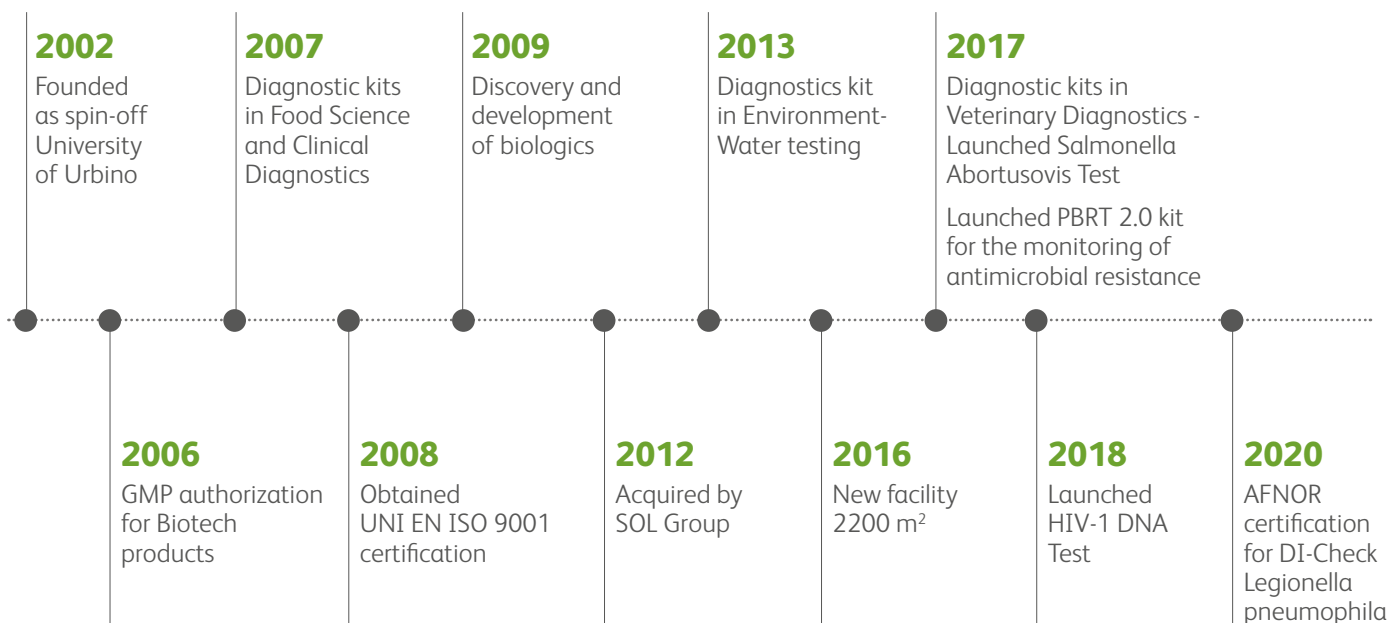
## Customer Orientation

We take care of our customers, providing the best technical and scientific support and a continuous attention to customer's needs.





# History and Milestones



# Content

<b>Clinical Diagnostics</b>	<b>3</b>
HIV-1 DNA Test PRO	4
Listeria Test	5
<b>Antimicrobial Resistance</b>	<b>7</b>
PBRT 2.0 Kit - PCR based replicon typing	8
<b>Veterinary Diagnostics</b>	<b>9</b>
Salmonella Abortusovis Test	10
Listeria Sheep / Listeria Goat Test	11
Avian DNA Sexing Test	12
<b>Food Science</b>	<b>13</b>
Foodborne pathogens	14
Ingredient authentication	15
<b>Environment - Water testing</b>	<b>17</b>
Legionella - Water testing	18
<b>Products Overview</b>	<b>20</b>





# Clinical Diagnostics

Diagnostics solutions for human infectious disease





# HIV-1 DNA Test PRO

Among the different markers of HIV-1 persistence in infected cells, total HIV DNA is to date the most widely used.

The quantification of HIV-1 DNA in blood samples or peripheral blood mononuclear cells (PBMC) is considered an useful clinical marker for the therapeutic management of HIV-1 infected patient. Moreover, in patient with undetectable RNA viral load the HIV DNA is the only parameter that can be measured.

HIV-1 proviral DNA detection is indicated for HIV diagnosis in infants born to infected mothers below 2-years of age: serology may remain positive due to passive transfer of antibodies through placenta. Detection of proviral DNA is a sensitive and specific way of diagnosing HIV infection and is a very useful adjunct test in the context of primary infection in those with negative or indeterminate serology.

HIV-1 DNA Test PRO is a real-time PCR assay for the detection and quantification of all viral forms of HIV-1 DNA, the kit provides ready to use PCR mixes with a technology that neutralizes a broad spectrum of PCR inhibitors that compromise assay performance with whole blood. HIV-1 DNA Test PRO allows the simultaneous amplification of HIV DNA and human Telomerase Reverse Transcriptase (hTERT). The endogenous gene allows to verify DNA extraction success, to determine the presence of PCR inhibitors and to obtain HIV DNA copies without cellular DNA quantification.

## Field of application

### Quantitative test

- Evaluation and study of HIV-1 reservoir
- Predicting the failure of antiretroviral therapy at an early stage
- Monitoring and refining therapeutic strategies

### Qualitative test

- Diagnosis of HIV in mother-to-child transmission cases
- Diagnosis of early HIV-1 infection

## Product specification

Technology	quantitative/qualitative real-time PCR
Kit content	PCR mixes, Standard Curve and Control are included and ready to use
Target gene	LTR (HIV gene) hTERT (endogenous gene)
Specimen	Whole blood or PBMC cells
Size	96 tests 32 tests
Testing time	3 hours
Thermal cycler compatibility	Require qPCR cycler with filter sets for FAM and VIC/HEX/JOE dyes. Tested on Rotor-Gene Q, QuantStudio 3-5, ABI 7500, ABI 7900, CFX96 Touch Deepwell Detection System



# Listeria Test - CE IVD

Listeriosis is a foodborne illness caused by consumption of food contaminated with the bacterium *Listeria monocytogenes*.

Pregnant women are about 13 to 20 times more likely than the general population to get listeriosis.

Maternal infection may manifest as a nonspecific, flu-like illness with fever but can result in severe foetal and neonatal infection, leading to foetal loss, preterm labour, neonatal sepsis, meningitis and death.

Even if listeriosis is a rare disease, sporadic cases and outbreaks can occur and early diagnosis and intervention may prevent or minimize the consequences of infection.

The Listeria Test is an ELISA assay CE-IVD marked for the detection of anti-listeriolysin O (LLO) antibodies in human serum and plasma. LLO is the unique toxin recognized as the major determinant of the humoral response in animals and humans.

## Field of application

- Screening test for the monitoring of high-risk patients such as pregnant women, especially during listeria outbreaks or when symptoms occur
- Non-invasive monitoring test for minimizing the risk of listeriosis through planned controls just before and during pregnancy
- Rapid test for a preliminary diagnosis of *Listeria monocytogenes* infection, in combination with culture method

## Product specification

Technology	indirect ELISA
Kit content	All reagents and controls are ready to use and included in the kit 1 microplate (12 x 8 well strips on single well holding frame) coated with a recombinant LLO
Specimen	Serum or plasma sample
Size	96 tests / 1 plate
Testing time	3 hours



## Clinical Diagnostics - Ordering information

CODE	PRODUCT	DESCRIPTION	SIZE
<b>HIV</b>			
MBK0086	HIV-1 DNA Test	real-time PCR kit	96 tests
MBK0086-32T	HIV-1 DNA Test	real-time PCR kit	32 tests
MBK0087	HIV-1 DNA Test PRO	real-time PCR kit	96 tests
MBK0087-32T	HIV-1 DNA Test PRO	real-time PCR kit	32 tests
<b>Listeria monocytogenes</b>			
AKE0007	Listeria Test	ELISA assay	96 tests / 1 plate
<b>Aging - Laminopathies</b>			
MBK0031	EMD Gene Amplification kit for direct sequencing	end-point PCR kit	96 tests
MBK0010	LMNA Gene Amplification kit for direct sequencing	end-point PCR kit	96 tests
MBK0025	ZMPSTE24 Gene Amplification kit for direct sequencing	end-point PCR kit	108 tests
MBK0050	Progerin/Lamin A	real-time PCR kit	160 tests





# Antimicrobial Resistance

Molecular epidemiology of plasmid-mediated antibiotic resistance



# PBRT 2.0 Kit - PCR based replicon typing

Antibiotic resistance is a serious threat to public health leading to increased healthcare costs, prolonged hospital stays, treatment failures and sometimes death. Plasmids represent one of the most difficult challenge for counteracting the dissemination of antimicrobial resistance in Gram-negative bacteria.

Therefore, the identification of plasmid characteristics and behaviour in different bacterial hosts provides fundamental knowledge regarding the transmission of antimicrobial resistance. Nowadays, the PCR based replicon typing method is the most commonly used technique for plasmid typing of *Enterobacteriaceae*.

The PBRT 2.0 kit is a PCR-based assay developed and validated in collaboration with Dr. A. Carattoli that allows an early typing of plasmids conferring drug resistance, offering the possibility to screen before sequencing. The PBRT 2.0 kit allows fast and easy plasmids characterization and molecular identification through replicons detection: up to 30 replicons representative of major incompatibility groups and replicase genes are identified on resistance plasmids circulating among *Enterobacteriaceae*.

## Field of application

- Molecular identification of a broad range of plasmid type in antimicrobial resistance surveillance studies
- Screening of plasmid content before sequencing

## Product specification

Technology	end-point PCR
Analysis of results	Gel electrophoresis or fragment analysis
Kit content	8 PCR mixes, 8 Positive Controls and DNA polymerase are included
Target replicons	HI1, HI2, HIB-M, I1α, I1γ, I2, X1, X2, X3,X4, K, B/O, M, N, N2, FII, FIA, FIB, FIB-M, FIB-KQ, FIB-KN, FIIK, FIIS, P1, R, U, L, A/C, T and W
Specimen	bacterial species isolated from clinical, veterinary, food specimens etc.
Size	192 tests
Testing time	3-5 hours

## Antimicrobial resistance - Ordering information

CODE	PRODUCT	DESCRIPTION	SIZE
MBK0078	PBRT 2.0 kit	end-point PCR kit	192 tests





# Veterinary Diagnostics

Diagnostics solution for livestock and avian



# Salmonella Abortusovis Test

Abortion in sheep due to *S. Abortusovis* is an important health concern in the Mediterranean area, where the sheep industry has a significant economic impact.

Infections have been reported in several countries where sheep farming is common. Ovine salmonellosis due to *S. Abortusovis* is on the list of diseases notifiable to the World Organization of Animal Health (OIE) and in several countries, is included in Regulations defining the sanitary conditions for sheep trade and movement.

The *Salmonella* Abortusovis Test is an ELISA assay for the detection of IgG anti- *Salmonella* Abortusovis in sheep serum and plasma samples. The test is designed to be used for the diagnosis of abortive salmonellosis infection and evaluation of antibody response to vaccination. The product is OIE certified.



## Field of application

- Rapid serological identification of infected animals
- Demonstrate historical freedom from infection in a defined population (country/zone/compartments/flock)
- Understand the prevalence and risk of *S. Abortusovis* infection at a herd management level
- Check the immunity response to *S. Abortusovis* vaccination
- Supplemental test to confirm the diagnosis of *S. Abortusovis* infections, in conjunction with culture method

## Product specification

Technology	indirect ELISA
Kit content	All reagents and controls are included in the kit 1 microplate (12 x 8 well strips) coated with LPS
Specimen	Serum or plasma sample
Size	96 tests / 1 plate
Testing time	3 hours





# Listeria Sheep / Listeria Goat Test

*Listeria monocytogenes* is the causative agent of listeriosis, a severe disease associated with a high case fatality rate. Nearly all the domestic animals are susceptible to *L. monocytogenes* infections, but animal listeriosis most commonly occurs in ruminants.

Animals can be infected by the ingestion of feedstuffs contaminated with *L. monocytogenes* which is widely distributed in the farm's environment. Listeriosis is a zoonotic disease but the epidemiological surveillance of livestock is critical for prevention of foodborne listeriosis in human beings.

In ruminants *L. monocytogenes* primarily causes encephalitis, uterine infections and death occurs in 4-48 hours. Recovery is rare.

The Listeria Sheep/Goat Test is an indirect enzyme-linked immunosorbent assay (ELISA) intended for the rapid detection of anti-Listeriolysin O (LLO) antibodies in sheep/goat serum and plasma.

The LLO is a specific toxin recognized as the major determinant of the humoral response against *L. monocytogenes* in animals and humans.

## Listeria Sheep Test

### Field of application

- Rapid serological screening of sheep herds to detect infected animals
- Sensitive and specific test to understand the prevalence and risk of *L. monocytogenes* infection in the flock in order to develop appropriate control strategies

### Product specification

Technology	indirect ELISA
Kit content	All reagents and controls are included in the kit 1 microplate (12 x 8 well strips)
Specimen	serum or plasma samples
Size	96 tests/1 plate
Testing time	3 hours

## Listeria Goat Test

### Field of application

- Rapid serological screening of goat herds to detect infected animals
- Sensitive and specific test to understand the prevalence and risk of *L. monocytogenes* infection in the flock in order to develop appropriate control strategies

### Product specification

Technology	indirect ELISA
Kit content	All reagents and controls are included in the kit 1 microplate (12 x 8 well strips)
Specimen	serum or plasma samples
Size	96 tests/1 plate
Testing time	3 hours



# FAST Avian Sexing Test

In many bird species males and females have very similar phenotypic traits (sexual monomorphism) and discrimination based on external characteristics is not possible. In nestlings it is even more difficult than in the adults to distinguish between the two sexes.

Traditional methods for gender identification as the observation of sex-specific behaviour, laparoscopy, laparotomy are time consuming, expensive and in some cases invasive and dangerous.

The most common method for avian sexing is based on amplification and electrophoresis of the Chromo-helicase-DNA binding (CHD) genes, widely used markers for sex determination in birds. The Avian DNA Sexing Test is a molecular method for gender identification of monomorphic bird using samples of feathers.

## Field of application

- Gender identification of monomorphic birds of any age, any time of the year
- The test is applicable to a large number of bird species

## Product specification

Technology	end-point PCR
Kit content	PCR mixes, and DNA Polymerase and universal male and female controls
Target gene	CHD-W and CHD-Z genes
Specimen	Feathers
Sample preparation	DNA extraction using FAST Avian Extraction Kit
Size	48 tests
Testing time	Less than 3 hours

## Veterinary diagnostics - Ordering information

CODE	PRODUCT	DESCRIPTION	SIZE
<b>Ruminants</b>			
AKE0016	Salmonella Abortusovis Test	ELISA assay	96 tests / 1 plate
AKE0006	Listeria Sheep Test	ELISA assay	96 tests / 1 plate
AKE0005	Listeria Goat Test	ELISA assay	96 tests / 1 plate
<b>Avian</b>			
MBK0069	Genomic DNA Isolation kit	DNA extraction kit	50 extractions
MBK0101	FAST Avian Extraction Kit	DNA extraction kit	48 extractions
MBK0102	FAST Avian Sexing PCR Kit	end-point PCR kit	48 tests





# Food Science

Quality products for food safety testing



# Foodborne pathogens

Intoxications and infections caused by foodborne pathogens represent an increasing public health problem, with nearly a quarter of the population at higher risk for illness today.

Several outbreaks of food-borne illnesses following consumption of food caused by *L. monocytogenes*, *Salmonella* spp. and Shiga Toxin producing *Escherichia coli* (STEC) have been reported in recent years, indicating the importance of this problem in safeguarding public health.

Microbiological quality control programs are increasingly applied throughout food chain production in order to minimize the risk of infection for the consumer. Thus, the availability of reliable and rapid test systems to detect the presence or absence becomes increasingly important for the agricultural and food industry. Traditional method for food testing is based on culture methods, although reliable and efficient, require several days before results are produced.

Diatheva has specifically design a complete product line based on real-time PCR technology for the rapid detection of *Salmonella*, *L. monocytogenes* and STEC from food samples complete of sample preparation and DNA extraction.

## Field of application

- Rapid and sensitive detection of *L. monocytogenes* in food and environmental samples after enrichment in Half Fraser Broth
- Rapid and sensitive detection of *Salmonella* spp. in food samples and environmental after enrichment in Buffered Peptone Water
- Rapid and sensitive detection of STEC virulence genes (*eae*, *stx* 1-2) and 6 major STEC serogroups (O26-O111-O145-O157-O103-O104) in only few hours following bacterial enrichment

## Product specification

Technology	qualitative real-time PCR
Kit content	PCR mixes and DNA Polymerase, Positive and Negative controls
Specimen	food and environmental samples
Sample preparation	DNA extraction using Bacterial DNA Isolation Single Step
Size	variable sizes are available
Testing time	16-24 hours depending on pathogen
Thermal cycler compatibility	Require qPCR cycler with filter sets for FAM and VIC/HEX/JOE dyes

Complete and tailored solutions for entry into PCR technology:  
laboratory equipment, PCR machine and training





# Ingredient authentication

## Quantification of Soft/Durum Wheat Contamination

Correct and detailed labelling of food composition has become a crucial element in the global market. Wheat is the most important cereal in diets worldwide and flour is the primary product used for manufacturing bread, semolina and pasta.

The system developed by Diatheva permits to quantify common wheat contamination in grain, semolina and derivative products and is based on DNA detection that is more stable than other components even when subjected to technological processes used in the food industry. DNA can be amplified and detected with high sensitivity and specificity, constituting an excellent molecular marker of the presence of soft wheat in the product.

### Field of application

- Reliable quantification of soft wheat adulteration in durum wheat-based foodstuffs by real-time PCR

### Product specification

Technology	quantitative real-time PCR
Kit content	PCR mix ready to use, Standard DNA and 3 % DNA Solution and Negative control
Specimen	corn, flour and derivative products such as pasta
Sample preparation	DNA extraction using Grain DNA extraction kit
Size	150 tests
Testing time	3 hours
Thermal cycler compatibility	Require qPCR cycler with filter sets for FAM and VIC/HEX/JOE dyes



## Food Science - Ordering information

CODE	PRODUCT	DESCRIPTION	SIZE
<b>Foodborne pathogens</b>			
MKZ0002	Multipathogen enrichment medium	Enrichment medium	500 g
MBK0063	Bacterial DNA Isolation Single Step	DNA extraction kit	50 extractions
MBK0076	Bacterial DNA Isolation Single Step	DNA extraction kit	384 extractions / 4 plates
MBK0061	Fast DNA Extraction kit	DNA extraction kit	50 extractions
MBK0091	Fast DNA Extraction kit	DNA extraction kit	100 extractions
MBK0054	Salmonella spp. FLUO kit	real-time PCR kit	50 tests
MBK0057	Salmonella spp. FLUO kit	real-time PCR kit	100 tests
MBK0056	Listeria Monocytogenes FLUO kit	real-time PCR kit	50 tests
MBK0090	Listeria Monocytogenes FLUO kit	real-time PCR kit	100 tests
MBK0077-PL	Listeria Monocytogenes FLUO kit	real-time PCR kit	384 tests
MBK0071	E. coli O157 FLUO kit	real-time PCR kit	50 tests
MBK0053	Multipathogen FLUO kit (for Salmonella and <i>L. monocytogenes</i> )	real-time PCR kit	50 tests
MBK0019	Multipathogen FLUO kit (for Salmonella, <i>L. monocytogenes</i> and <i>E. coli O157</i> )	real-time PCR kit	50 tests
MBK0074	STEC Serotypes FLUO kit	real-time PCR kit	75 tests
MBK0068	STEC FLUO Detection kit	real-time PCR kit	50 tests
MBK0084	Enterohaggregative E. coli Detection kit	real-time PCR kit	50 tests
MBK0085	E. coli O104 FLUO kit	real-time PCR kit	50 tests
<b>Ingredient authentication</b>			
MBK0064	Grains DNA Extraction kit	DNA extraction kit	50 extractions
MBK0062	Grain Quantitative kit	real-time PCR kit	150 tests



# Environment Water testing

Quality solutions for the detection and quantification  
of pathogenic microorganisms in water





# Legionella - Water testing

*Legionella*, which is responsible for legionellosis, is a gram-bacterium ubiquitously present at low concentration in natural aquatic ecosystems.

*Legionella* can easily reach and contaminate man-made aquatic environments, such as buildings water systems, cooling towers, fountains which are important sources of infection for humans.

Among the described *Legionella* species, *L. pneumophila* is one of the most important water-based bacterial pathogens in developed countries. The reference method for enumeration of *Legionella* in water is culture, however aside from the fact that requires up to 14 days for analysis it often fails to detect legionellae in water samples. In this context, quantitative real-time PCR is an alternative tool for rapid and accurate detection or quantification of *L. pneumophila* in water samples.

Diateva provides a complete solution based on real-time PCR technology for *Legionella* spp. and *L. pneumophila* control in water samples, developed to meet the needs for rapid *Legionella* detection and quantification.

The DI-Check Legionella pneumophila method is AFNOR validated on multiple PCR instruments: Applied Biosystems™ QuantStudio 96-well (Thermo Fisher Scientific), CFX96 Touch™ Real-Time PCR Detection System (Biorad), CFX96 Touch™ Deepwell Detection System (Biorad) and Rotor-Gene Q (Qiagen).

Using the DI-Check Analysis Software for *L. pneumophila*, the interpretation of results will be automatically performed.

## Field of application

- Detection of *Legionella* spp. and/or *L. pneumophila* in all types of water samples
- Quantification of *Legionella* spp. and/or *L. pneumophila* in all types of water samples
- Rapid *Legionella* outbreaks investigation

## Product specification

Technology	quantitative/qualitative real-time PCR
Kit content	PCR mixes, Standard DNA, Reference Material and controls
Specimen	All types of water samples
Sample preparation	DNA extraction using DNApure Water Isolation kit
Size	100 tests
Testing time	4 hours
Thermal cycler compatibility	Require qPCR cycler with filter sets for FAM and VIC/HEX/JOE dyes





## Environment - Water Testing - Ordering information

CODE	PRODUCT	DESCRIPTION	SIZE
<b>Legionella</b>			
MBK0080	DNApure Water Isolation kit (AFNOR)	DNA extraction kit	100 extractions
MBK0058	DI-Check Legionella spp. kit	real-time PCR kit	100 tests
MBK0081	DI-Check L. pneumophila kit (AFNOR)	real-time PCR kit	100 tests

Complete and tailored solutions for entry into PCR technology:  
laboratory equipment, PCR machine and training



### DI-Check Legionella pneumophila

Certificate reference No. DTV 41/01-12/19, with end of validity 04-Dec-2023

#### WATER ANALYSIS METHODS

The method is validated for the detection and quantification of *L. pneumophila* in all types of water samples, by comparison to the reference method NF T90-471 (2015) and ISO/TS 12869 (2019) and according to the AFNOR certification's validation protocol for the detection and enumeration of *L. pneumophila* by PCR.

<https://nf-validation.afnor.org/>

# Products overview

## Diagnostic kit

CODE	PRODUCT	DESCRIPTION	SIZE
Clinical Diagnostics			
HIV			
MBK0086	HIV-1 DNA Test	real-time PCR kit	96 tests
MBK0086-32T	HIV-1 DNA Test	real-time PCR kit	32 tests
MBK0087	HIV-1 DNA Test PRO	real-time PCR kit	96 tests
MBK0087-32T	HIV-1 DNA Test PRO	real-time PCR kit	32 tests
Listeria monocytogenes			
AKE0007	Listeria Test	ELISA assay	96 tests / 1 plate
Aging - Laminopathies			
MBK0031	EMD Gene Amplification Kit for direct sequencing	end-point PCR kit	96 tests
MBK0010	LMNA Gene Amplification Kit	end-point PCR kit	96 tests
MBK0025	ZMPSTE24 Gene Amplification Kit for direct sequencing	end-point PCR kit	108 tests
MBK0050	Progerin/Lamin A qPCR Detection Kit	real-time PCR kit	160 tests
Antimicrobial resistance			
MBK0078	PBRT 2.0 Kit	end-point PCR kit	192 tests
Veterinary Diagnostics			
Sheep			
AKE0016	Salmonella Abortusovis Test	ELISA assay	96 tests / 1 plate
AKE0006	Listeria Sheep Test	ELISA assay	96 tests / 1 plate
AKE0005	Listeria Goat Test	ELISA assay	96 tests / 1 plate
Avian			
MBK0069	Genomic DNA Isolation Kit	DNA extraction kit	50 extractions
MBK0101	FAST Avian Extraction Kit	DNA extraction kit	48 extractions
MBK0102	FAST Avian Sexing PCR Kit	end-point PCR kit	48 test
Food Science			
Foodborne pathogens			
MKZ0002	Multipathogen enrichment medium	Enrichment medium	500 g
MBK0063	Bacterial DNA Isolation Single Step	DNA extraction kit	50 extractions
MBK0076	Bacterial DNA Isolation Single Step	DNA extraction kit	384 extractions / 4 plates
MBK0061	Fast DNA Extraction Kit	DNA extraction kit	50 extractions
MBK0091	Fast DNA Extraction Kit	DNA extraction kit	100 extractions
MBK0054	Salmonella spp. FLUO Kit	real-time PCR kit	50 tests
MBK0057	Salmonella spp. FLUO Kit	real-time PCR kit	100 tests
MBK0056	Listeria Monocytogenes FLUO Kit	real-time PCR kit	50 tests
MBK0090	Listeria Monocytogenes FLUO Kit	real-time PCR kit	100 tests
MBK0077-PL	Listeria Monocytogenes FLUO Kit	real-time PCR kit	384 tests
MBK0071	E. coli O157 FLUO Kit	real-time PCR kit	50 tests
MBK0053	Multipathogen FLUO Kit (for <i>Salmonella</i> and <i>L. monocytogenes</i> )	real-time PCR kit	50 tests
MBK0019	Multipathogen FLUO Kit (for <i>Salmonella</i> , <i>L. monocytogenes</i> and <i>E. coli</i> O157)	real-time PCR kit	50 tests
MBK0074	STEC Serotypes FLUO Kit	real-time PCR kit	75 tests
MBK0068	STEC FLUO Detection Kit	real-time PCR kit	50 tests
MBK0084	Enteraggregative E. coli Detection Kit	real-time PCR kit	50 tests
MBK0085	E. coli O104 FLUO Kit	real-time PCR kit	50 tests
Ingredient authentication			
MBK0064	Grains DNA Extraction Kit	DNA extraction kit	50 extractions
MBK0062	Grain Quantitative Kit	real-time PCR kit	150 tests
Environment - Water testing			
Legionella			
MBK0080	DNApure Water Isolation Kit (AFNOR)	DNA extraction kit	100 extractions
MBK0058	DI-Check Legionella spp. Kit	real-time PCR kit	100 tests
MBK0081	DI-Check L. pneumophila Kit (AFNOR)	real-time PCR kit	100 tests

CODE	PRODUCT	DESCRIPTION	SIZE
<b>Others</b>			
<b>Toxic Algae</b>			
MBK0007	Dinoflagellate DNA isolation Kit	DNA extraction kit	50 extractions
MBK0003	Alexandrium spp. PCR detection Kit	end-point PCR kit	50 tests
MBK0008	Dinophysis spp. PCR detection Kit	end-point PCR kit	50 tests
<b>Fish Pathogens</b>			
MBK0009	Photobacterium damsela PCR Detection Kit	end-point PCR kit	50 tests
<b>PCR Reagents</b>			
MBK0011	Hot Rescue real-time PCR Kit - Sybr green	real-time PCR mix	400 tests
MBK0012	Hot Rescue real-time PCR Kit - FLUO probe	real-time PCR mix	400 tests
MBK0013	2X PCR Master Mix	end-point PCR mix	400 tests
MBR0001-D	NEW Hot Rescue DNA Polymerase	DNA Polymerase	250 U
MBR0001-P	Hot Rescue PLUS DNA Polymerase	DNA Polymerase	250 U

## Antibodies

CODE	PRODUCT	CLONALITY	DESCRIPTION	SIZE	FORM
ANT0001	Rabbit Anti HIV-I Tat	Polyclonal	HIV	200 µL	Liquid
ANT0003	Rabbit Anti-HIV-I Tat - BIOTIN	Polyclonal	HIV	200 µL	Liquid
ANT0005	Rabbit Anti HIV-I Tat - FITC	Polyclonal	HIV	500 µL	Liquid
ANT0041	Rabbit Anti HIV-I Tat Affinity Purified	Polyclonal	HIV	200 µL	Liquid
ANT0033	Rabbit Anti HIV-I P24	Polyclonal	HIV	200 µL	Liquid
ANT0071	Mouse Anti HIV-I Integrase CLONE 2	Monoclonal	HIV	50 µg	Liquid
ANT0060	Mouse Anti HIV-I REV CLONE 6	Monoclonal	HIV	50 µg	Liquid
ANT0061	Mouse Anti HIV-I p24 CLONE 4	Monoclonal	HIV	50 µg	Liquid
ANT0068	Mouse Anti HIV-I p24 CLONE 2	Monoclonal	HIV	50 µg	Liquid
ANT0006	Rabbit Anti - LLO	Polyclonal	Listeria monocytogenes	200 µL	Liquid
ANT0016	Rabbit Anti - LLO affinity purified	Polyclonal	Listeria monocytogenes	200 µL	Liquid
ANT0023	Rabbit Anti Ag 85b	Polyclonal	Mycobacterium paratuberculosis	200 µL	Liquid
ANT0045	Rabbit Anti Human Prelamin A (1188-1)	Polyclonal	Laminopathies	200 µL	Liquid
ANT0046	Rabbit Anti Human Cleaved Farnesylated Prelamin A (1188-2)	Polyclonal	Laminopathies	200 µL	Liquid
ANT0072	Rabbit Anti Human LAMIN A/C	Polyclonal	Laminopathies	200 µL	Liquid
ANT0078	Rabbit Anti Human Prelamin A BIOTIN	Polyclonal	Laminopathies	200 µL	Liquid
ANT0079	Rabbit Anti Human Lamin A BIOTIN	Polyclonal	Laminopathies	200 µL	Liquid
ANT0082	Rabbit Anti Streptococcus mutans	Polyclonal	Oral pathogens	200 µL	Liquid
ANT0083	Rabbit Anti Streptococcus oralis	Polyclonal	Oral pathogens	200 µL	Liquid
ANT0084	Rabbit Anti Fusobacterium nucleatum	Polyclonal	Oral pathogens	200 µL	Liquid
ANT0085	Rabbit Anti Porphyromonas gingivalis	Polyclonal	Oral pathogens	200 µL	Liquid
ANT0088	Rabbit Anti Streptococcus mutans	Polyclonal	Oral pathogens	200 µL	Liquid
ANT0089	Mouse anti 1,3 BETA GLUCAN (CLONE 2G8)	Monoclonal	Fungal infections	100 µg	Liquid

## Recombinant protein

CODE	PRODUCT	SPECIES	DESCRIPTION	SIZE	FORM
REP0002a	Recombinant TAT Clade B	HIV-1	Infectious diseases	100 µg	Lyophilized
REP0002b	Recombinant TAT Clade B	HIV-1	Infectious diseases	50 µg	Lyophilized
REP0004	Recombinant TAT Clade B BIOTIN	HIV-1	Infectious diseases	100 µg	Lyophilized
REP0030	Recombinant TAT Clade C	HIV-1	Infectious diseases	50 µg	Lyophilized
REP0032	Recombinant TAT cys22	HIV-1	Infectious diseases	50 µg	Lyophilized
REP0033	Recombinant TAT cys22	HIV-1	Infectious diseases	100 µg	Lyophilized
REP0043	Recombinant TAT CLADE A	HIV-1	Infectious diseases	50 µg	Lyophilized
REP0044	Recombinant TATCLADE D	HIV-1	Infectious diseases	50 µg	Lyophilized
REP0045	Recombinant TAT CLADE D	HIV-1	Infectious diseases	100 µg	Lyophilized
REP0061	Recombinant TAT CLADE B C27A-C31AMUTANT	HIV-1	Infectious diseases	50 µg	Lyophilized
REP0062	Recombinant TAT CLADE B C31A-C34A MUTANT	HIV-1	Infectious diseases	50 µg	Lyophilized
REP0059	Recombinant TAT CRF_02AG	HIV-1	Infectious diseases	100 µg	Lyophilized
REP0060	Recombinant TAT CRF_02AG	HIV-1	Infectious diseases	50 µg	Lyophilized
REP0034	Recombinant p24	HIV-1	Infectious diseases	50 µg	Lyophilized
REP0011	Recombinant p25	HIV-1	Infectious diseases	100 µg	Lyophilized
REP0024	Recombinant p24 BIOTIN	HIV-1	Infectious diseases	100 µg	Liquid
REP0035	Recombinant NEF Clade B	HIV-1	Infectious diseases	50 µg	Lyophilized
REP0046	Recombinant NEF BIOTIN	HIV-1	Infectious diseases	100 µg	Liquid
REP0055	Recombinant GAG Clade B	HIV-1	Infectious diseases	50 µg	Lyophilized
REP0063	Recombinant Integrase	HIV-1	Infectious diseases	20 µg	Liquid
REP0058	Recombinant GAG	SIV	Infectious diseases	50 µg	Lyophilized
REP0006	Recombinant Listeriolysin - O (LLO)	L. monocytogenes	Infectious diseases	50 µg	Liquid
REP0007	Recombinant Listeriolysin - O (LLO)	L. monocytogenes	Infectious diseases	100 µg	Liquid
REP0022	Recombinant Listeriolysin - O pest MINUS	L. monocytogenes	Infectious diseases	100 µg	Liquid
REP0038	Recombinant Prelamin A	Human	Nuclear lamins/ Laminopathies	100 µg	Liquid
REP0039	Recombinant Prelamin A	Human	Nuclear lamins/ Laminopathies	50 µg	Liquid
REP0040	Recombinant Lamin A	Human	Nuclear lamins/ Laminopathies	100 µg	Liquid
REP0041	Recombinant Lamin A	Human	Nuclear lamins/ Laminopathies	50 µg	Liquid
REP0048	Recombinant Prelamin A R527H	Human	Nuclear lamins/ Laminopathies	100 µg	Liquid
REP0050	Recombinant Progerin	Human	Nuclear lamins/ Laminopathies	100 µg	Liquid
REP0051	Recombinant Progerin	Human	Nuclear lamins/ Laminopathies	50 µg	Liquid
REP0047	Recombinant Progerin	Rat	Nuclear lamins/ Laminopathies	100 µg	Liquid
REP0036	Recombinant FKBP12	Human	Cyclophilins	100 µg	Liquid
REP0052	Recombinant Cyclophilin A	Human	Cyclophilins	100 µg	Liquid
REP0053	Recombinant Cyclophilin A	Human	Cyclophilins	500 µg	Liquid
REP0054	Recombinant CEACAM 1 Peptide	Human	Tumor markers	300 µg	Liquid
REP0065	Recombinant CEACAM 1 protein fragment	Mouse	Tumor markers	100 µg	Liquid
REP0066	Recombinant CEACAM 1 protein fragment	Marmoset	Tumor markers	100 µg	Liquid
REP0067	Recombinant CEACAM 1 protein fragment	Human	Tumor markers	100 µg	Liquid
REP0064	Recombinant Thimidyne Phosphorylase	Human	Tumor markers	5000 U	Liquid
REP0025	Recombinant Ag85B	Mycobacterium tuberculosis	Mycobacterium tuberculosis	50 µg	Lyophilized
REP0026	Recombinant Ag85B	Mycobacterium tuberculosis	Mycobacterium tuberculosis	100 µg	Lyophilized



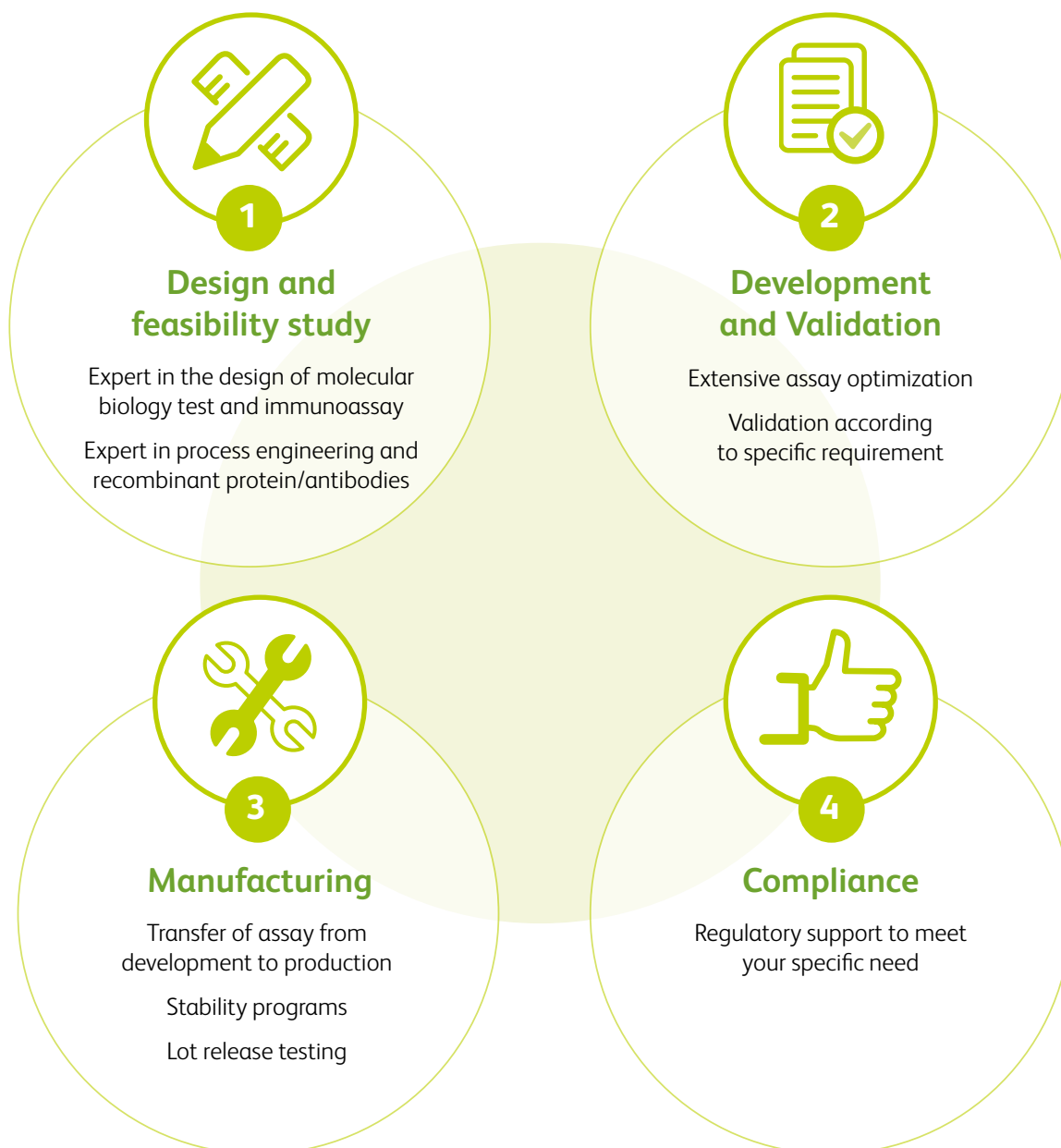
We strive to answer all emails in less than 24 hours.

# R&D and OEM Manufacturing Services

## We can be your trusted partner

Diatheva offers custom development services and production of recombinant protein, antibodies and diagnostic kit. Our experienced process and assay development experts will customize products to meet your specific application requirements.

## Your partner from development to regulatory compliance





---

Connect 

Visit our website [www.diatheva.com](http://www.diatheva.com)

---

**DIATHEVA Srl**

Via Sant'Anna 131/135  
Cartoceto - 61030 (PU) - Italy

**t** +39 0721 830605

**f** +39 0721 837154

info@diatheva.com

**www.diatheva.com**

**SOLGROUP**  
a breath of life