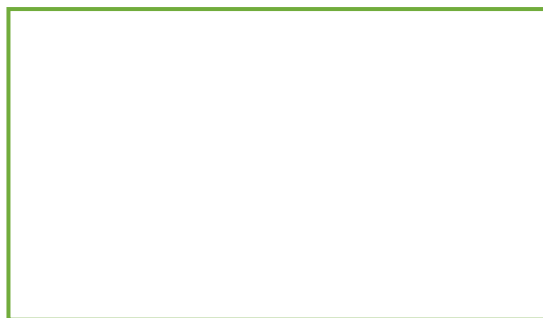




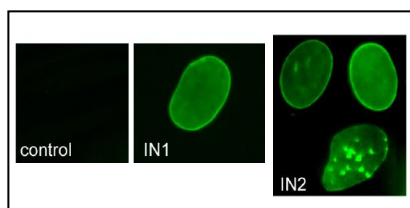
Viale Piceno 137/f  
61032 Fano PU (IT)  
Telephone + 39 (0) 721830605  
FAX +39 (0) 721837154  
e-mail: info@diatheva.com  
www.diatheva.com



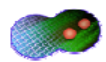
## Rabbit Anti Human Prelamin A

**ANT0045**  
**200µl**

<b>Description</b>	Several laminopathies are characterized by anomalous accumulation of prelamin A. This polyclonal antibody is able to detect full-length prelamin A, while it does not recognize either mature lamin A or cleaved prelamin A intermediates.
<b>Product type</b>	Polyclonal antibody
<b>Immunogen</b>	Prelamin A C-terminus peptide
<b>Source</b>	Rabbit
<b>Reacts with</b>	Full-length prelamin A protein
<b>Specificity</b>	Anti prelamin A polyclonal antibody detects full-length prelamin A which has not yet undergone to proteolytic steps, both in its non-farnesylated and in its farnesylated form. The farnesylated form of full-length prelamin A is labelled by antibody with lower efficiency. The antibody does not cross react with mature lamin A.
<b>Tested applications</b>	WB, ELISA, Immunofluorescence
<b>Recommended dilutions</b>	Recommended starting dilutions can vary lot-to-lot. Consult the product information label in the package for lot specific values.  <b>Note:</b> When using any primary antibody or fluorescence-labelled secondary antibody for the first time, titrate out the antibody to determine which dilution allows the strongest specific signal with the lowest background for your sample.  <i>For untested applications or species please refer to the <a href="#">S.M.A.K.</a> program.</i>
<b>Purity</b>	Polyclonal immunoglobulins purified by protein A affinity chromatography and stabilized with 5% of glycerol.
<b>Form</b>	Liquid. Supplied in 100mM sodium citrate, 50mM Tris and 0.05% v/v glycerol. Neutral pH.
<b>Storage instructions</b>	Shipped at +4°C. When stored at +4°C, the antibody is stable for 18 months. For extended storage, the solution may be frozen at -20°C in working aliquots. <b>Note:</b> Avoid repeated freezing and thawing cycles.
<b>References</b>	Available on library section: <a href="http://www.diatheva.com/library.htm">http://www.diatheva.com/library.htm</a>



Immunofluorescence staining with anti-prelamin A antibody 1188-1 in human fibroblasts. Control: untreated cells; IN1: cells accumulating full-length farnesylated prelamin A by inhibitor treatment; IN2: cells accumulating non-farnesylated prelamin A by inhibitor treatment.



EURIP  
LAMINOPATHIES  
[www.projects.mfpl.ac.at/euro-laminopathies](http://www.projects.mfpl.ac.at/euro-laminopathies)



supported by European Union's FP6  
Life Science, Genomics and Biotechnology for Health  
LSHM-CT-2005-018690

**Anti prelamin A polyclonal antibody  
APPLICATION PROTOCOLS**

**Western blotting:**

- Saturate the membrane with 4% BSA in TBS
- Apply 1188-1 antibody at 1:100 - 1:500 dilution for 1 hour at room temperature
- Wash two time with TBS + 4% BSA + tween 0.05%
- Apply secondary antibody for 1 hour at Room temperature

**Immunofluorescence:**

- Fix the cells in methanol at -20°C for seven minutes
- Incubate with primary antibody diluted 1:50 - 1:500 overnight at 4°C in PBS containing 4% BSA
- Apply secondary antibody for 1 hour at room temperature